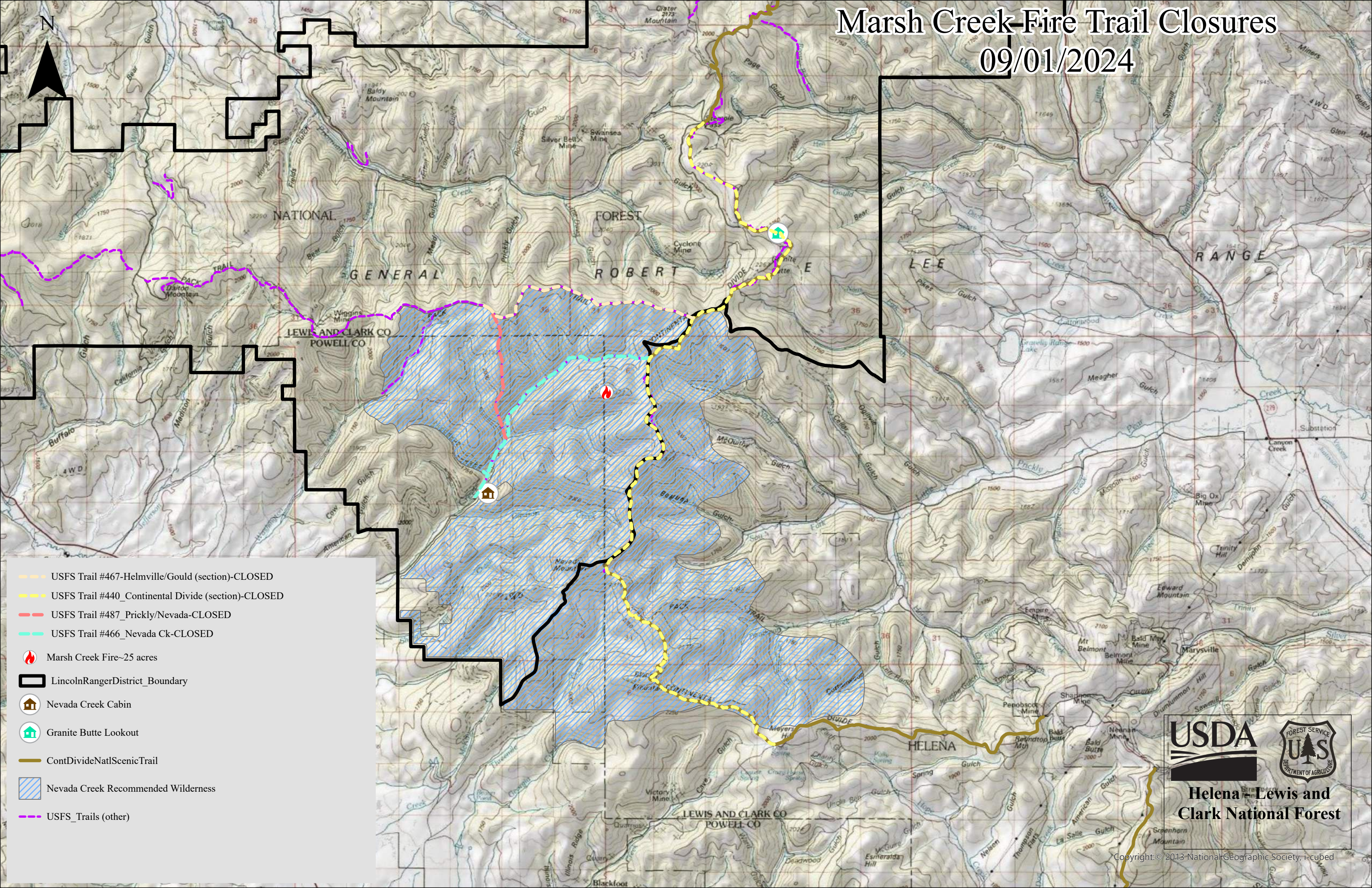




Marsh Creek Fire Trail Closures

09/01/2024



- USFS Trail #467-Helmville/Gould (section)-CLOSED
- USFS Trail #440_Continental Divide (section)-CLOSED
- USFS Trail #487_Prickly/Nevada-CLOSED
- USFS Trail #466_Nevada Ck-CLOSED
- Marsh Creek Fire~25 acres
- LincolnRangerDistrict_Boundary
- Nevada Creek Cabin
- Granite Butte Lookout
- ContDivideNatlScenicTrail
- Nevada Creek Recommended Wilderness
- USFS_Trails (other)



Helena - Lewis and Clark National Forest